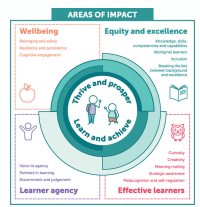




# Marion Primary School Site Learning Plan 2025



## School Values: COURAGE, HARMONY and INTEGRITY

### Action Plan

<b>Goal</b>	To increase percentage of students to 80-85% achieving in Core and Core + (as their composite score) in Dibels Assessments by the end of Term 4, 2025.
<b>Student Engagement</b>	<ul style="list-style-type: none"> <li>● Attendance - whole school approach.</li> <li>● Positive Behaviour for Learning (PBL) strategies to support whole class engagement.</li> <li>● Berry Street - Morning Circles and Interoception/mindfulness building connection and class culture.</li> <li>● Student intervention - What's the Buzz program/Pastoral Care</li> <li>● Incorporate - We Are Learning To (WALT), What I'm Looking For (WILF), This Is Because (TIB).</li> <li>● Implementation of engagement norms to increase participation.</li> </ul>
<b>Professional Learning</b> <b>Student Assessment</b> <b>Data analysis</b>	<ul style="list-style-type: none"> <li>● Provide teachers with PD involving Dibels Progress Monitoring Assessments.</li> <li>● Teachers engaged in PD involving new Reading Comprehension Work (Partnership/Site Pupil Free Days, Staff meetings).</li> <li>● Observations/feedback by Reading Coach, Leadership and Portfolio Reading Coach</li> <li>● Plan for implementation of Reading Project Work (Refer to attached Assessment and Staff Meeting Schedule).</li> <li>● Teachers will use Dibels progress monitoring in Literacy to track and monitor students. This data will inform next steps and required intervention programs.</li> <li>● Whole school data analysis. Are students able to transfer learning in other data sets, is it evident in (PAT, NAPLAN, formative assessments).</li> <li>● SSOs to track, monitor and share student progress in Tier 2/3 literacy intervention programs (SAGE, MacqLit, MiniLit, small group and individual programs).</li> <li>● Collaborative Planning to support explicit instruction.</li> <li>● PD Berry Street</li> </ul>
<b>Learner Agency</b>	<ul style="list-style-type: none"> <li>● Develop Learner Agency through goal setting with individual students based on their Dibels data.</li> <li>● Professional Development in The Public Education Strategy and Areas Of Impact (AOI).</li> </ul>

### Resources

- Heggerty R-2. Years 3-6 Morphology
- Literacy intervention Program resources.
- PD - Fluency passages, multisyllabic/difficult words, topic focus and text selection.
- Wellbeing Resources - Berry Street and What's the buzz?
- Positive Behaviour for Learning (PBL) and engagement norms.
- Public Education Strategy - Areas Of Impact (AOI).
- Dibels resources.