

2025 annual report to the Community

Marion Primary School

Marion Primary School number: 993

Partnership: Marion Inland



School principal:

Renee Philp

Signature

Date of endorsement:

09/02/2026



Government
of South Australia
Department for Education

Context Statement

Marion Primary School caters for students from R-6. At the time of this report, the enrolment in 2025 is 149. Marion Primary School is classified as Category 5 on the Department for Education Index of Educational Disadvantage. At the time of this report, the school population includes 11% Aboriginal students, 14% students with disabilities, 10% students with English as an additional language or dialect (EALD) funded background, 1% children/young people in care. Further information about the school is available on the school's website (including its context statement), as well as the My School website.

Data Source: Department for Education data holdings from Mid census captured in AUGUST 2025.

Governing Council Report

2025 was a great year at Marion Primary. We began the year by welcoming Renee Philp as our temporary Principal, and were excited when temporary became permanent in June, after she was awarded the role for the coming ten years. The continuity of a ten-year term for Renee, alongside Georgina Sprigg as deputy for five years, is something parents have been wanting and are very glad to now have.

The students (and teachers) showed great resilience as enrolment numbers demanded a class restructure just a few weeks into the year. Following the restructure, the children settled well into their new classrooms and the year began in earnest.

Term One was busy as we met for Acquaintance Night, celebrated Harmony Day with a family picnic on the oval, and competed in the annual Sports Day. The cold weather hindered no one, and Banksia, Wattle, and Waratah battled for the trophy. Several students performed well enough to earn a spot at the SAPSASA interschool competition later in the year. It was great to see the effort put in by all the students, staff, and parent volunteers. Term One also included the beginning of after school basketball, which was as popular as ever with students. Marion Primary had at least one team in each age category, and the students played well, displaying the school values of courage, harmony, and integrity. The instrumental program also began, with a number of students choosing to learn viola, violin, or cello.

Terms Two and Three saw the students participate in Reconciliation Week, swimming lessons, and Book Week. It's always great to see how many children dress up as book characters for the parade, alongside staff and some parents too. Our choir joined with others from across the state to sing at the Festival of Music – a wonderful celebration that highlights the importance of music education in schools.

Throughout these terms, the fundraising committee worked hard to put on events to foster community and raise money for the school. The children relaxed at a movie night and danced the night away at a disco. They also enjoyed buying gifts for their loved ones at the Mother's Day and Father's Day gift stalls. Thank you to the fundraising team for their work on these events and others throughout the year.

2025 ended with "Marion's Got Talent" – our annual end of year concert. The weather was perfect for families to gather on the oval, share dinner, and watch the children perform. We said farewell to the graduating students and a number of much-loved teachers and SSOs, we thank them for their hard work with students and wish them the best.

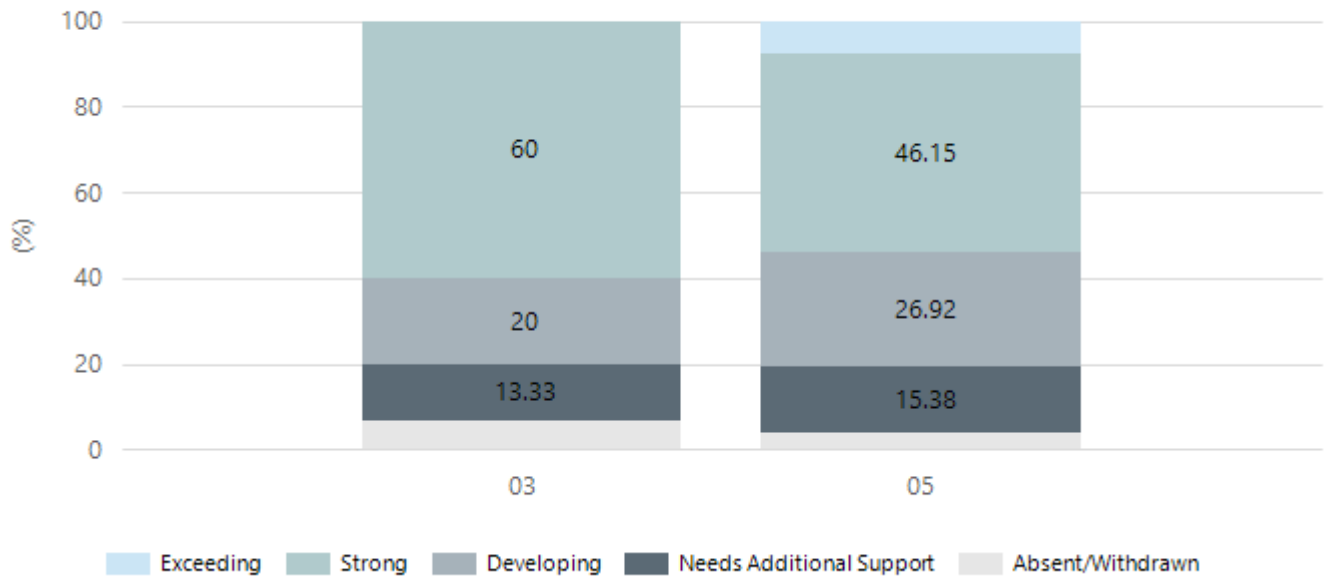
Before and after school, our OSHC program has continued. Robyn Shanahan, the OSHC director, does an incredible job planning activities for the children. The school holiday program is a highlight for many of the children, with fun excursions, interesting incursions, and lots of engaging things for them to do each day. For a school of our size, it's impressive what Robyn and the OSHC staff are able to provide.

Performance Summary

NAPLAN Proficiency

In 2023 the Australian Curriculum, Assessment and Reporting Authority (ACARA) - a Commonwealth Independent statutory authority - announced changes to NAPLAN performance reporting. The new approach replaces the previous numerical NAPLAN bands and the national minimum standard.

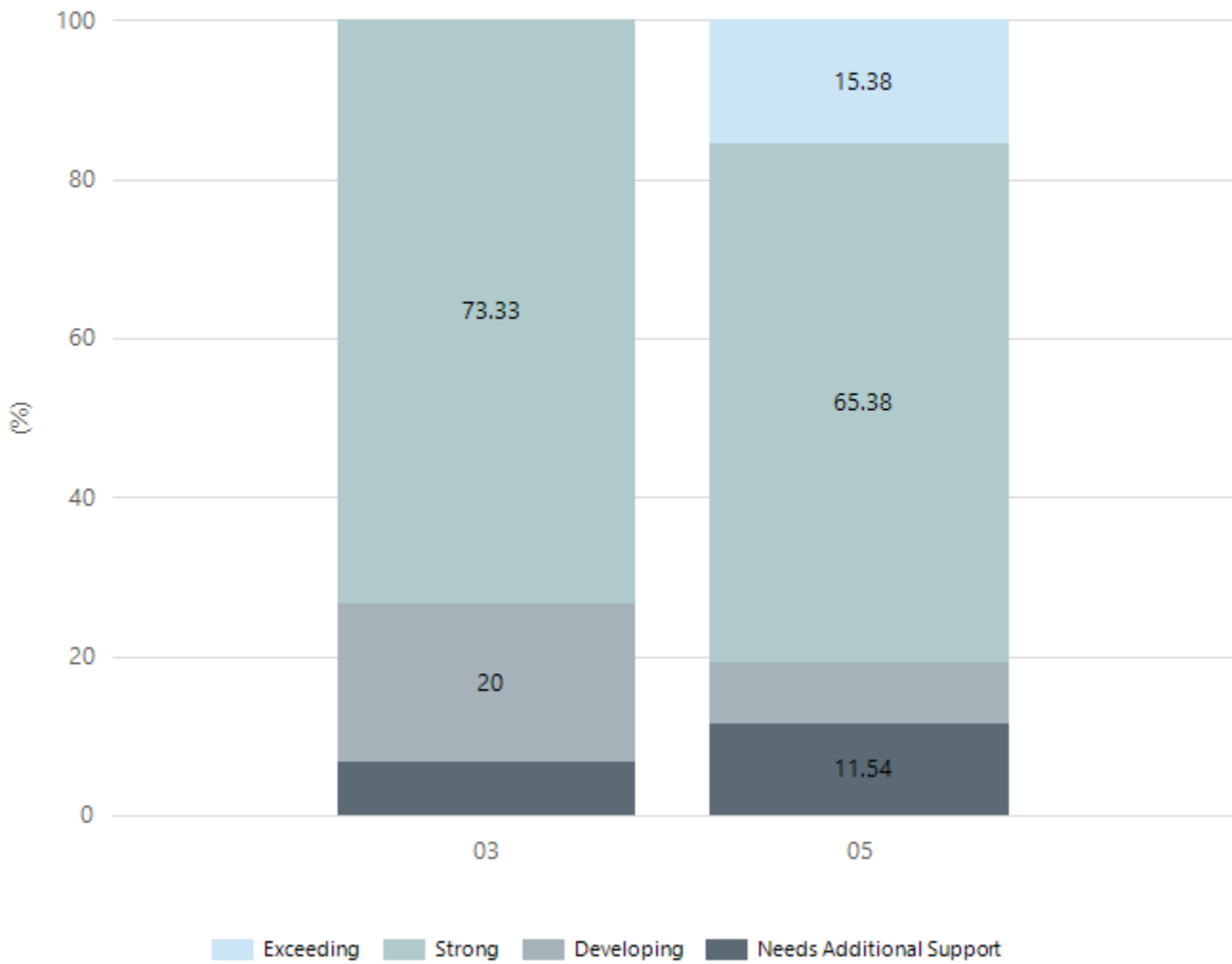
Numeracy



Year Level	03	05
Exceeding		2
Strong	9	12
Developing	3	7
Needs Additional Support	2	4
Absent/Withdrawn	1	1
Total	15	26

Data Source: Department for Education Assessment Data Holdings, 2025. If there are less than 6 students who sat NAPLAN in a school, no information will be shown. If a year level has less than 6 students, that year level will not be shown in NAPLAN results.

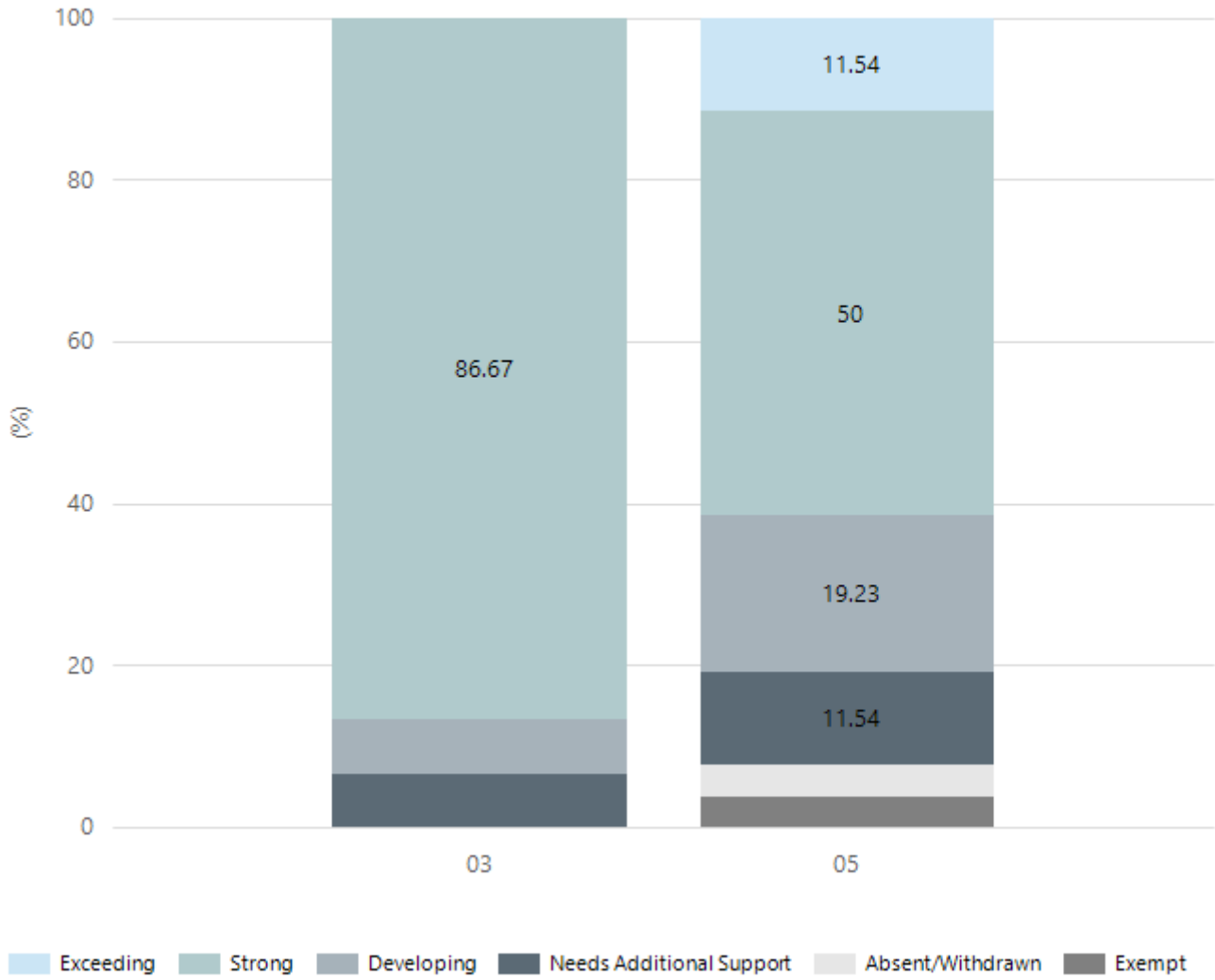
Reading



Year Level	03	05
Exceeding		4
Strong	11	17
Developing	3	2
Needs Additional Support	1	3
Total	15	26

Data Source: Department for Education Assessment Data Holdings, 2025. If there are less than 6 students who sat NAPLAN in a school, no information will be shown. If a year level has less than 6 students, that year level will not be shown in NAPLAN results.

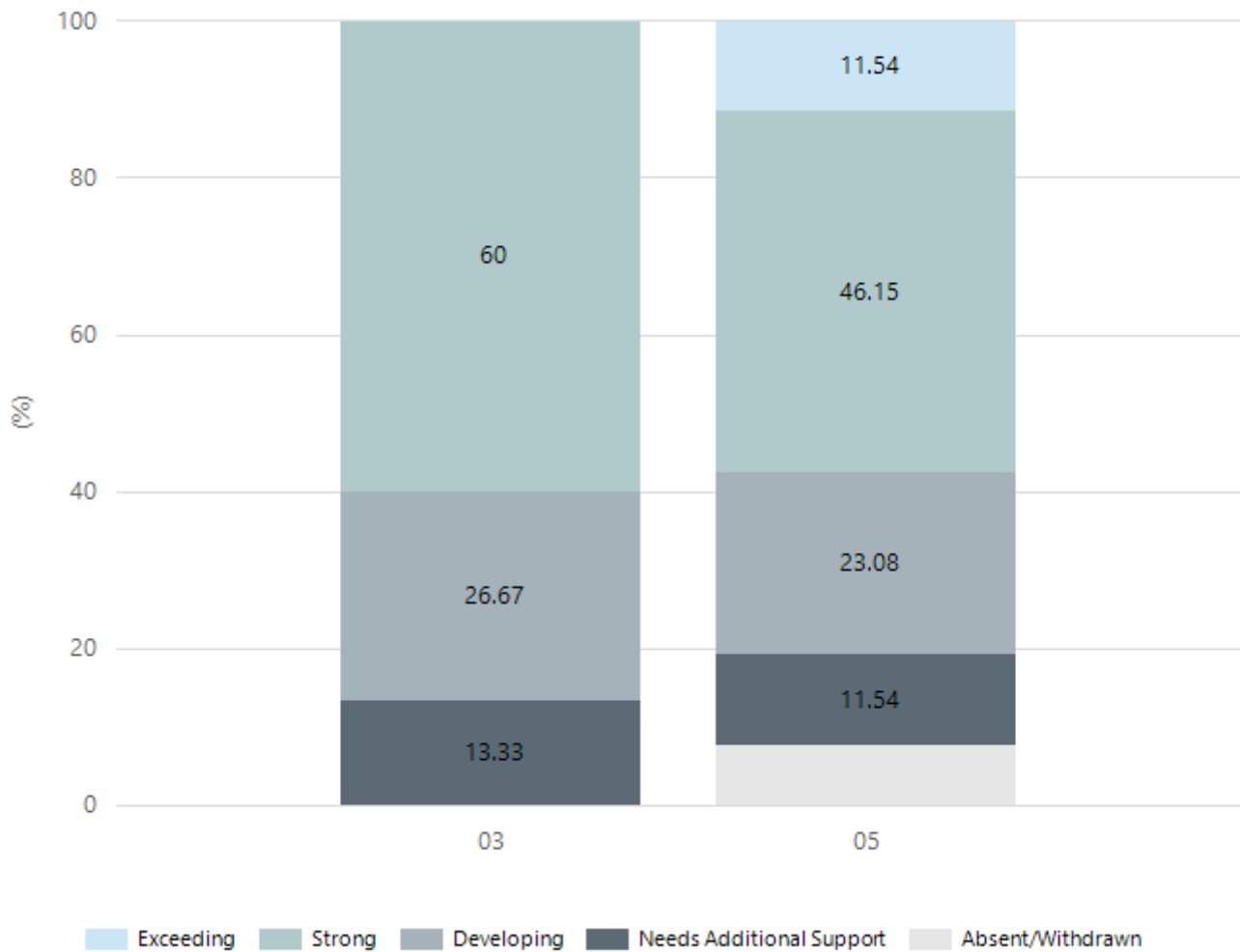
Writing



Year Level	03	05
Exceeding		3
Strong	13	13
Developing	1	5
Needs Additional Support	1	3
Absent/Withdrawn		1
Exempt		1
Total	15	26

Data Source: Department for Education Assessment Data Holdings, 2025. If there are less than 6 students who sat NAPLAN in a school, no information will be shown. If a year level has less than 6 students, that year level will not be shown in NAPLAN results.

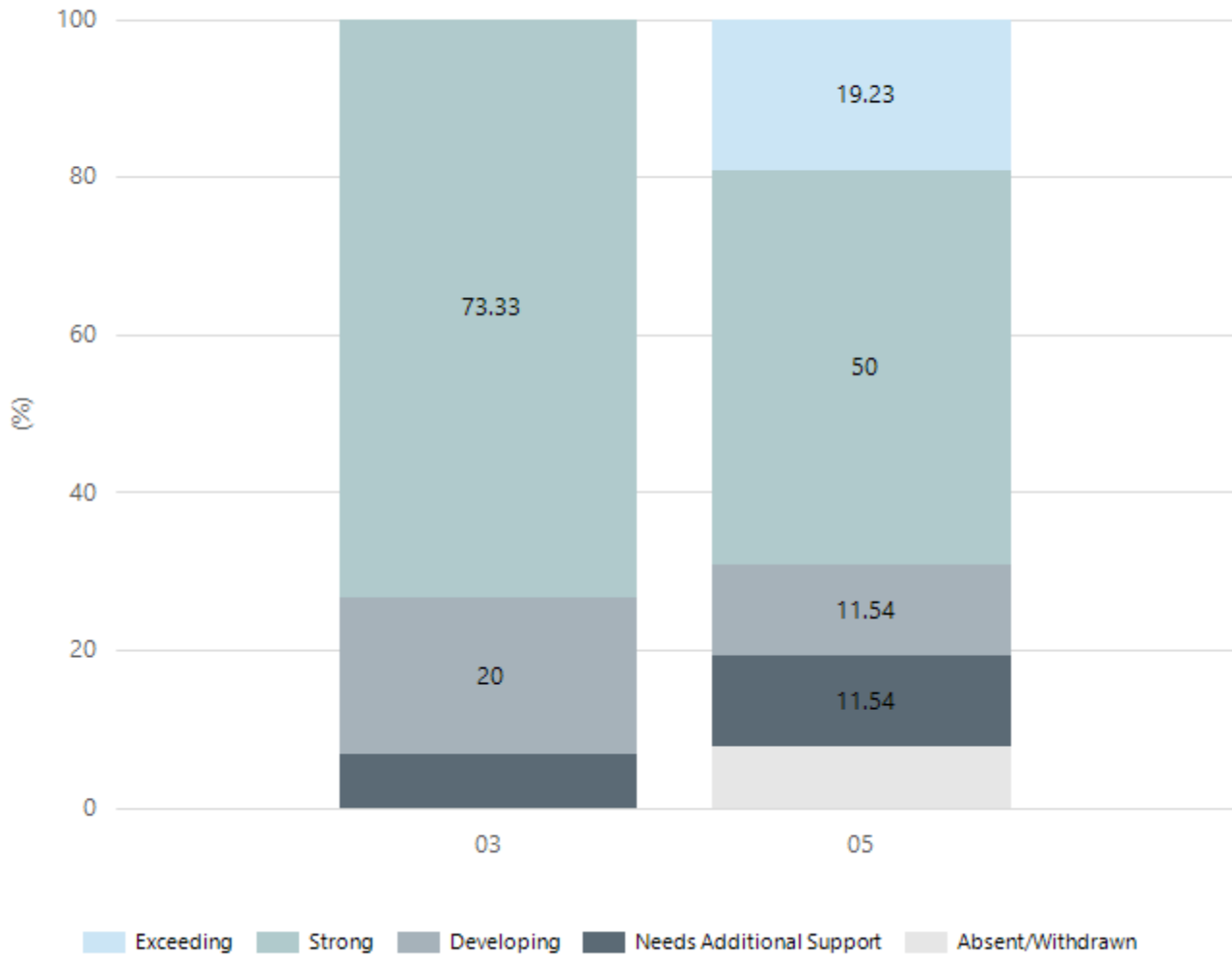
Grammar



Year Level	03	05
Exceeding		3
Strong	9	12
Developing	4	6
Needs Additional Support	2	3
Absent/Withdrawn		2
Total	15	26

Data Source: Department for Education Assessment Data Holdings, 2025. If there are less than 6 students who sat NAPLAN in a school, no information will be shown. If a year level has less than 6 students, that year level will not be shown in NAPLAN results.

Spelling



Year Level	03	05
Exceeding		5
Strong	11	13
Developing	3	3
Needs Additional Support	1	3
Absent/Withdrawn		2
Total	15	26

Data Source: Department for Education Assessment Data Holdings, 2025. If there are less than 6 students who sat NAPLAN in a school, no information will be shown. If a year level has less than 6 students, that year level will not be shown in NAPLAN results.

School Attendance

Year Level	2023	2024	2025
Reception	84.2%	88.2%	84.1%
Year 01	83.7%	91.3%	83.9%
Year 02	90.4%	91.7%	82.3%
Year 03	82.9%	90.3%	87.7%
Year 04	89.2%	85.0%	87.8%
Year 05	90.2%	87.5%	79.4%
Year 06	80.8%	92.7%	88.0%
Primary Other		83.3%	60.7%
Total	85.3%	89.3%	83.7%

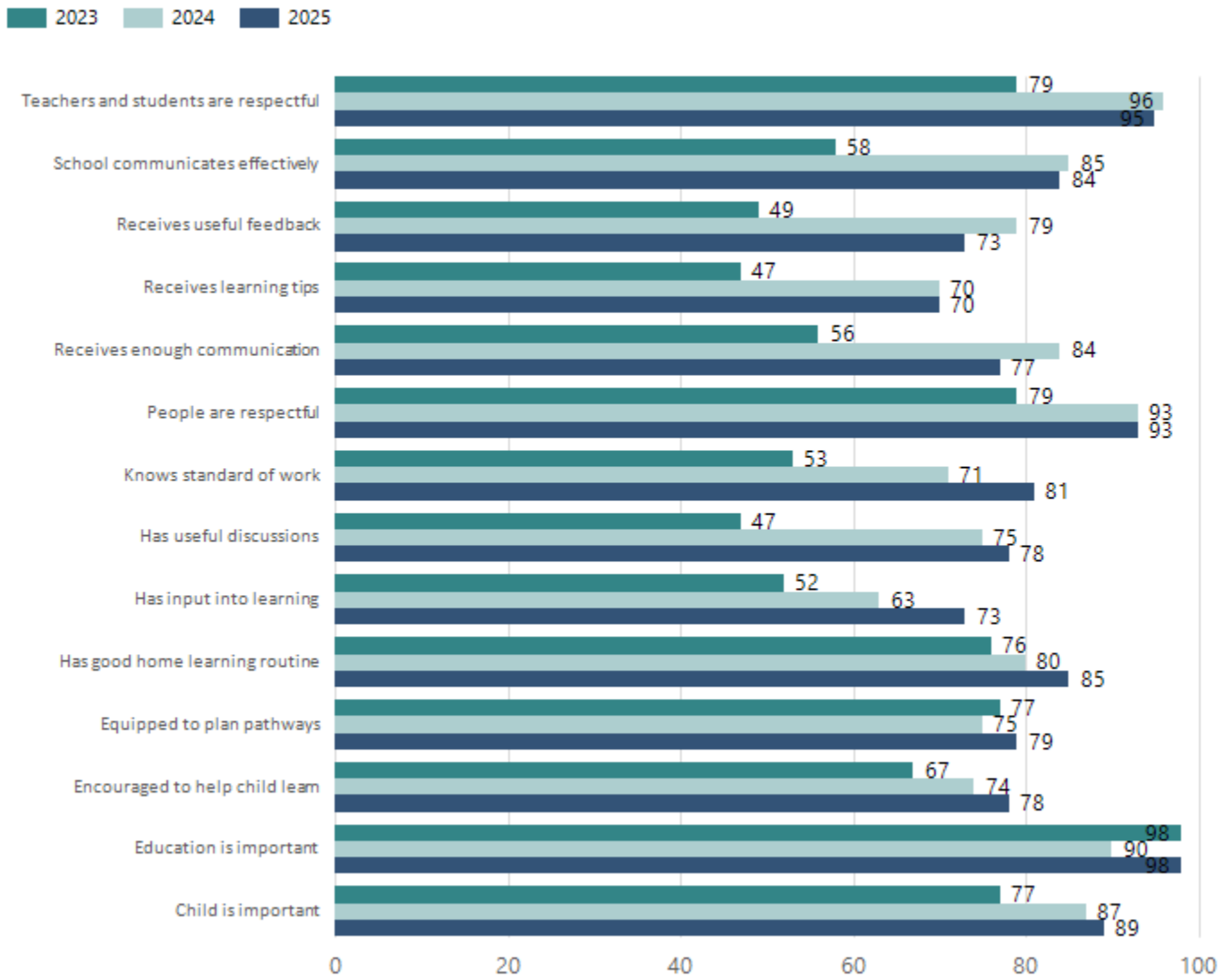
Data Source: Department for Education Attendance Data, Semester 1 Report 2025. A blank cell indicates there we no students enrolled. 'Primary Other' includes students enrolled in specialised education options. 'Secondary Other' includes students who have already spent a year at Year 12 and elected to undertake further study at Year 12.

Attendance Comment

In South Australia, all children and young people must be in school from 6 years to 16 years old. They must attend a government or non-government school full time. From age 16 to 17 however, young people must attend school or an approved learning program (such as an apprenticeship, traineeship, accredited course or university). Schools and parents must encourage and support students to come to school every day. Parents and caregivers must make sure their child is enrolled in a school, and attends school all day and everyday it is open, unless a child is sick or has an approved exemption. Teachers and leaders actively follow up when a student misses school, including recording all absences and non-attendance. All schools in South Australia have local attendance procedures governed under the Education and Children's Services Regulations 2020.

School Parent Opinion Survey Results

Proportion of agree/strongly agree response(%)



Data Source: 2025 Department for Education Parent Opinions Survey, Term 3 2025.

Intended Destination

Leave Reason	Number	%
IS - INTERSTATE	15	58.0%
NG - ATTENDING NON-GOV SCHOOL IN SA	1	4.0%
OV - LEFT SA FOR OVERSEAS	5	19.0%
TG - TRANSFERRED TO SA GOVERNMENT SCHOOL	4	15.0%
U - UNKNOWN	1	4.0%

Data Source: Department for Education Destination Data Report, 2025. Data extract term 3 2025. Data shows recorded destinations for students that left the school in the previous year. Data is uploaded by schools in term 3 and may not reflect final or total figures at time of report creation.

Highest Qualifications held by the teaching workforce and workforce composition

All teachers at this school are qualified and registered with the SA Teachers Registration Board.

Qualification Level	Number of Qualifications
Bachelor's degrees or Diplomas	13
Postgraduate Qualifications	2

Data Source: Data extracted from Mandatory Workforce Information Collections as on the last pay date of June 2025. As self-reported by staff in the system.

Please note: Data includes staff who are Actively employed and on extended paid leave. Please note only the highest qualification of the Teaching staff is reported. Excludes any number of other certifications earned.

Workforce composition including indigenous staff

	Teaching Staff		Non-Teaching Staff	
	Indigenous	Non-Indigenous	Indigenous	Non-Indigenous
Full-Time Equivalents	0.0	12.7	0.1	5.0
Persons	0.0	15.0	1.0	7.0

Data Source: Data extracted from Mandatory Workforce Information Collection as on the last pay date of June 2025.

Please note: Data includes staff who are actively employed and on extended paid leave. "Indigenous category" is self-reported by staff in the system.

Financial Statement

Funding Source	Amount
Grants: State	\$2,273,088.02
Grants: Commonwealth	\$4,600.00 (sports grant)
Parent Contributions	\$66,792.11
Fund Raising	\$4,639.94
Other	\$127,311.52

Data Source: School supplied data.